

## RETREAT LEADERSHIP

Guest Facilitator:  
Rev. Lois Colon,  
Spiritual Director  
and former First  
Pres Associate  
Pastor



### Presenters and Group Leaders



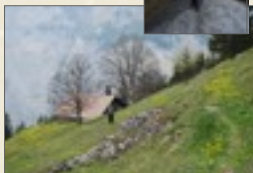
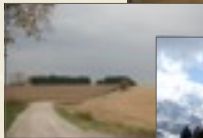
The Rev. Dr.  
Fairfax F. Fair,  
Pastor



The Rev. Mel  
Prentice-Hyers,  
Resident Minister



The Rev. Melissa  
Anne Rogers,  
Associate Pastor



FIRST PRESBYTERIAN CHURCH  
1432 WASHTENAW, ANN ARBOR,  
MICHIGAN

T: (734) 662-4466

[WWW.FIRSTPRESBYTERIAN.ORG](http://WWW.FIRSTPRESBYTERIAN.ORG)

## THE 2012 FIRST PRES WOMEN'S RETREAT

Friday, March 30 - Saturday, March 31  
The Weber Center, Adrian, Michigan



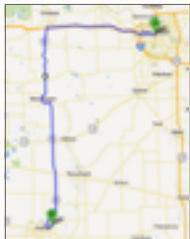
## PILGRIMS IN PROCESS:

## *OUR JOURNEYS IN FAITH*

COST: INCLUDES MEALS,  
LODGING, MATERIALS

Single room	\$80
Double room	\$60
College Student rate	\$30
Saturday only	If space, \$50

The Weber Center ((517) 266-4000, 1257 East Siena Heights Drive, Adrian, MI 49221 (is a Catholic retreat center, smoke-free facility features six stories, rooms with private baths and individually controlled heat; special areas for reflection and solitude; gift shop; resource library with Internet access; and nutritious meals. Enjoy God's creation through outdoor decks, more than 100 acres of wooded land, outdoor labyrinth, and circle meditation garden. Detailed directions will be emailed to participants.



## JOIN US FOR A TIME OF REFLECTION, FELLOWSHIP AND FAITH-DEEPENING

Our annual retreat takes us on a pilgrimage from Ann Arbor to the beautiful Weber Center in Adrian, Michigan. Beginning Friday evening and lasting through Saturday afternoon, your fellow companions on this journey are women of all ages from First Pres. Get away from the worries and cares of life to settle in for 24-hours of discovery - learning about yourself, where God is at work in your life, the journey of your own faith, and how we go forward in faith together!

### Schedule for the Retreat

#### Friday

- 6:00 - 7:00 p.m. Check-in, snacks
- 7:00 Mix & Mingle, Getting to know each other, Retreat Introduction, Intergenerational Small Groups
- 9:00 Reflections and Vespers (ending 9:30 p.m.)

#### Saturday

- 8 Morning Prayer
- 8:30 Breakfast
- 9:30 Leadership Presentations and Small Group Discussions
- 12 - 1 Lunch Break
- 1 - 3:30 Leadership Presentations and Small Group Discussions
- 3:30 Worship and Communion
- 4:00 Depart for home!

Note: Art, music, prayer, and other forms of worship will be a part of our time together.



Please register me!

Name \_\_\_\_\_

Email Address \_\_\_\_\_

Phone number \_\_\_\_\_

I am registering for (check one)

- single room (\$80)
- double room (\$60)
- Saturday rate (\$50) - if available (You'll be informed by March 23)
- college student rate (\$30)

Roommate preference: \_\_\_\_\_

Would you be willing to drive?

How many can you take? \_\_\_\_

Write checks to First Presbyterian Church.

**Payment and this form are due by  
March 10 to Rev. Melissa Anne Rogers.**